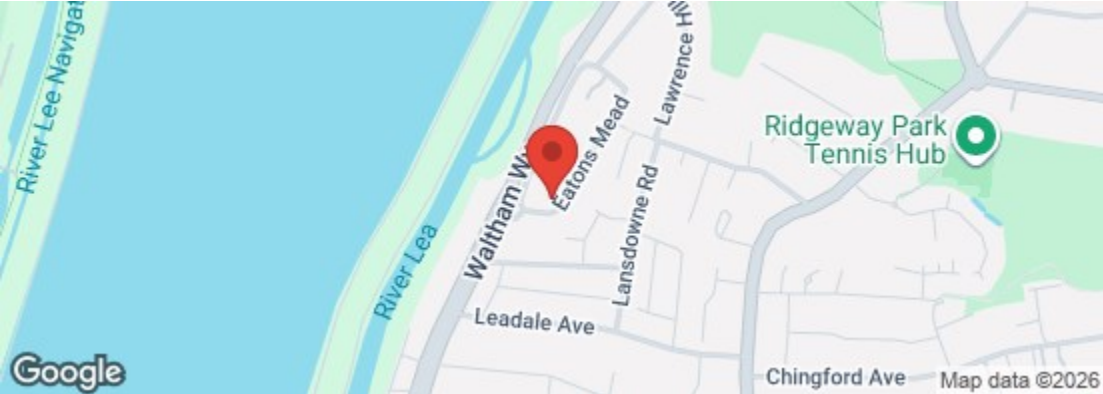
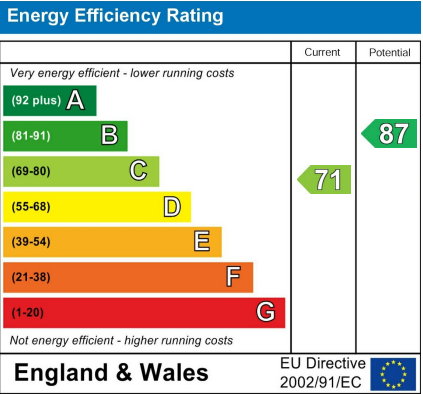




Council: Waltham Forest | Council Tax Band: A | Floor Area: sq ft



The Agent has not tested any apparatus ,equipment, fixtures and fittings or services and so cannot verify that they are in working order or fit for the purpose. A buyer is advised to obtain verification from their solicitor or surveyor.  
References to the tenure of a property are based on information supplied by the seller. The agent has not had the sight of the title documents. A buyer is advised to obtain verification from their solicitors.

CHURCHILL  
estates

CHURCHILL  
estates

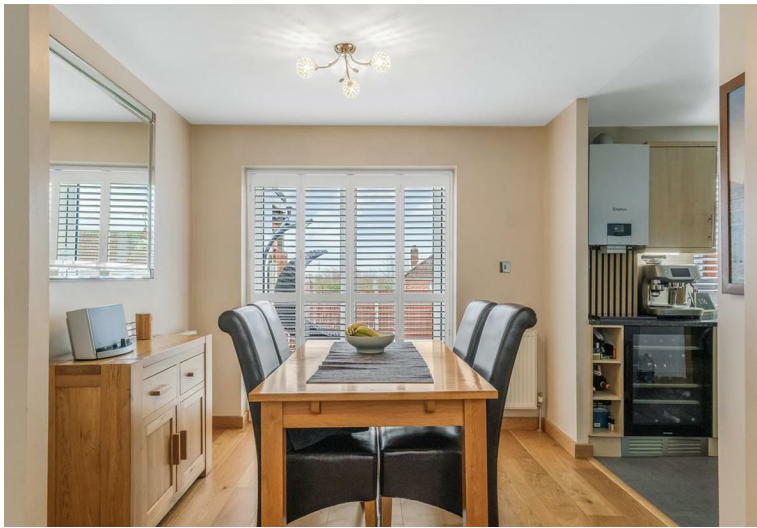
Eatons Mead, Chingford, E4 8AN  
Asking Price £550,000 Freehold

Bedrooms: 3 | Reception Rooms: 1 | Bathrooms: 1



Request a Viewing: 020 8524 0000 Email: southchingford@wearechurchills.co.uk





Nestled in the desirable area of Eatons Mead, Chingford, this immaculate mid-terrace house presents an exceptional opportunity for those seeking a modern and stylish home. With three well-proportioned bedrooms, this property is perfect for families or professionals looking for a comfortable living space.

Upon entering, you will be greeted by a spacious reception room that exudes warmth and charm, enhanced by the elegant engineered oak flooring. The modern kitchen is a true highlight, offering a sleek and functional space for culinary enthusiasts. It seamlessly flows into the dining area, making it ideal for entertaining guests or enjoying family meals.

The property boasts a contemporary bathroom, designed with both style and practicality in mind. Each bedroom is thoughtfully designed to provide a peaceful retreat, ensuring a restful night's sleep. Throughout the home, plantation shutters add a touch of sophistication while allowing for privacy and light control.

Outside, the property features a convenient driveway with parking for two vehicles, a rare find in this sought-after location. The absence of a chain means you can move in without delay, making this home even more appealing.

In summary, this three-bedroom house in Eatons Mead is a perfect blend of modern living and comfort, set in a lovely neighbourhood. With its immaculate condition and desirable features, it is an opportunity not to be missed.

